

# ***ACCELERATE***

How to Get Your Church Planting  
Movement Moving Again!



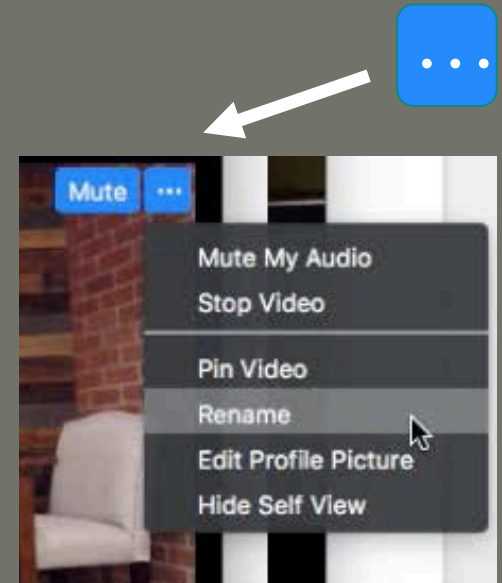
## Two Steps to Prepare for the Cohort

### 1. Rename Yourself

See Example:

- Regional – Name
- National – Name

2. Download & Print Worksheets that were emailed to you.



Regional - Your Full Name

**National – Gary Rohrmayer**

# Church Multiplication Partner Services

## Executive Consult

- Free Half-Day Executive Consult to assess your organizations capacity for church planting.

**FREE**

## Executive Coaching

- 10 Video Coaching Sessions
- 2 Onsite Training and Coaching Sessions
- One Free Admission to Accelerate
- Access to CMP Staff

**\$5000**

## Executive Coaching

- 12 Video Coaching Sessions
- One Free Admission to Accelerate
- Access to CMP Staff

**\$2500**

# Church Multiplication Partner Services

## Executive Consult

- Free Half-Day Executive Consult to assess your organizations capacity for church planting.

FREE

## Executive Coaching

- 10 Video Coaching Sessions
- 2 Onsite Training and Coaching Sessions
- One Free Admission to Accelerate
- Access to CMP Staff

\$5000

*\$2500*

## Executive Coaching

- 12 Video Coaching Sessions
- One Free Admission to Accelerate
- Access to CMP Staff

\$2500

*\$1250*

# If you are interested in ...

## A Free Consultation

- Contact Gary
- [info@multiplyingchurches.org](mailto:info@multiplyingchurches.org)

## A Coaching Relationship

- Contact one of our coaches through a private chat during the meeting.
- Or
- Contact Gary
- [info@multiplyingchurches.org](mailto:info@multiplyingchurches.org)

# Movement Systems

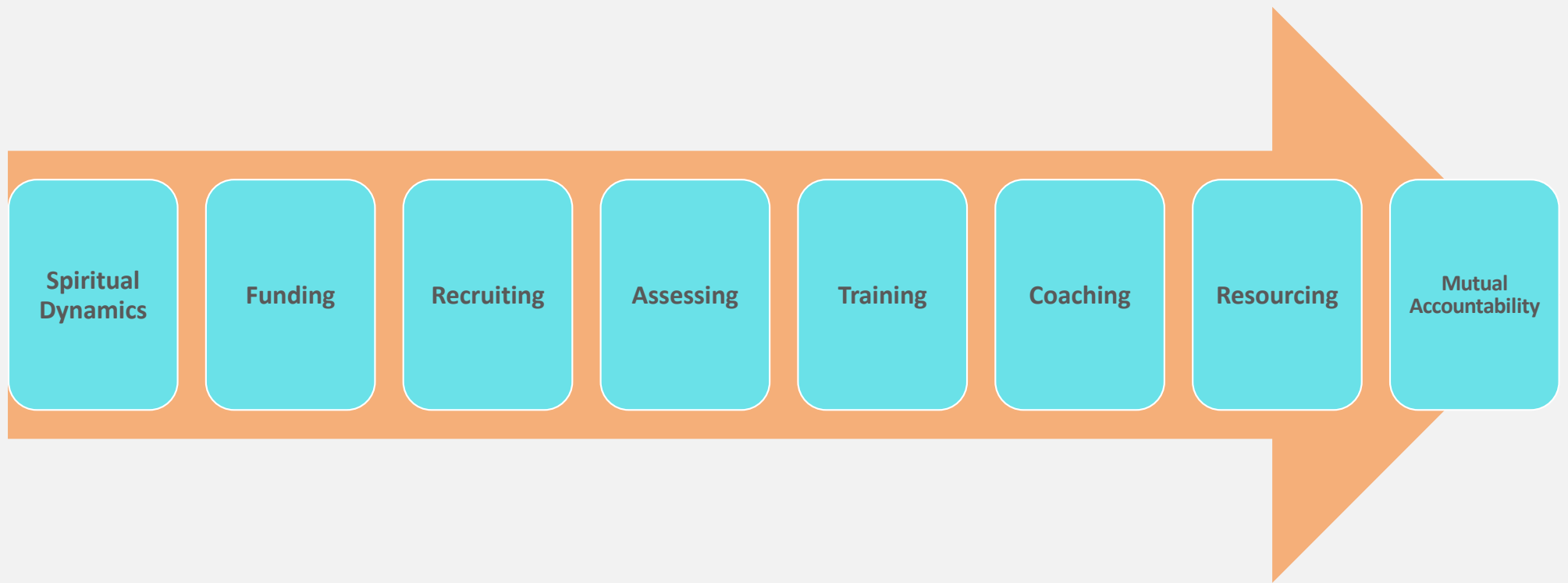
You will only expand to the capacity  
and effectiveness of your systems.



*Movement systems are  
**reproducible** and  
**interconnected** processes by  
which the organization  
**actualizes its values** and  
**achieves its mission.***



# Eight Systems for a Church Planting Movement





# Four Growth Engines for Your Movement



# Four Quality Control Systems for Your Movement



# Training

Developing strategies to equip church planters in building indigenous, multiplying and world impacting churches.



## TRAINING

**CONTENT  
CENTERED**

**VS**

**CONTEXT  
CENTERED**

Use the quadrant descriptions above to answer these four questions for your church planting organization.

HIGH	<b>PRESCRIPTIVE TRAINING</b> <ul style="list-style-type: none"><li>• Heavy content</li><li>• Didactic and directive</li><li>• Trainer-oriented</li><li>• Perhaps model specific</li><li>• Trainer defined outcomes</li></ul>	<b>ADAPTIVE TRAINING</b> <ul style="list-style-type: none"><li>• Principle-based</li><li>• Dynamic delivery</li><li>• Trainer-oriented</li><li>• Planter-oriented</li><li>• Mutually defined outcomes</li></ul>
CONTENT CENTERED	<b>INFORMAL TRAINING</b> <ul style="list-style-type: none"><li>• No formal content</li><li>• Low accountability</li><li>• Trainer has low input</li><li>• Planter has low output</li><li>• Focused on planter care or nurture</li></ul>	<b>CONTEXT-SPECIFIC TRAINING</b> <ul style="list-style-type: none"><li>• Abstract content</li><li>• On the job training</li><li>• Planter-oriented</li><li>• Model independent</li><li>• Planter defined outcomes</li></ul>
LOW		

LOW      **CONTEXT CENTERED**      HIGH

HIGH	How is your training overly prescriptive?	How can your training become more adaptive?
CONTENT CENTERED	In what ways can you leverage more informal training?	How is your training overly generic or abstract?
LOW		

LOW      **CONTEXT CENTERED**      HIGH



# Breakout Time

Have your worksheet ready to  
work on.



Take 10 minutes at the beginning of the breakout time to fill out the worksheet.

**TRAINING**

**CONTENT CENTERED**

**VS**

**CONTEXT CENTERED**

Use the quadrant descriptions above to answer these four questions for your church planting organization.

HIGH	<p><b>PRESCRIPTIVE TRAINING</b></p> <ul style="list-style-type: none"> <li>• Heavy content</li> <li>• Didactic and directive</li> <li>• Trainer-oriented</li> <li>• Perhaps model specific</li> <li>• Trainer defined outcomes</li> </ul>	<p><b>ADAPTIVE TRAINING</b></p> <ul style="list-style-type: none"> <li>• Principle-based</li> <li>• Dynamic delivery</li> <li>• Trainer-oriented</li> <li>• Planter-oriented</li> <li>• Mutually defined outcomes</li> </ul>
CONTENT CENTERED	<p><b>INFORMAL TRAINING</b></p> <ul style="list-style-type: none"> <li>• No formal content</li> <li>• Low accountability</li> <li>• Trainer has low input</li> <li>• Planter has low output</li> <li>• Focused on planter care or nurture</li> </ul>	<p><b>CONTEXT-SPECIFIC TRAINING</b></p> <ul style="list-style-type: none"> <li>• Abstract content</li> <li>• On the job training</li> <li>• Planter-oriented</li> <li>• Model independent</li> <li>• Planter defined outcomes</li> </ul>
LOW		

LOW      **CONTEXT CENTERED**      HIGH

HIGH	<p>How is your training overly prescriptive?</p>	<p>How can your training become more adaptive?</p>
CONTENT CENTERED	<p>In what ways can you leverage more informal training?</p>	<p>How is your training overly generic or abstract?</p>
LOW		

LOW      **CONTEXT CENTERED**      HIGH

# Breakout Time



# Quick Fire Reports

Share insights from each  
Breakout





# Resources for Training

## Church Planting Thresholds

Clint Clifton has made a digital version of his book Church Planting Thresholds available for free for Send Network subscribers.

To access the book, please enter your email.

<https://www.namb.net/kiosks/church-planting-thresholds-free-download>

# Leadership Reflection

**What is your “must win” you need to have this week to see coaching in your movement be more effective?**

## **Leader Reflection Worksheet**

This is my “one win” of the week:

What “habit of the heart” am I using this week to connect with God?

What “habit of the mind” am I using to keep my mind healthy and alert?

Who are a few people in my professional life I need to check in on this week?

What is my sense of what God is saying to me right now? What scriptures is He giving me?

# If you are interested in ...

## A Free Consultation

- Contact Gary
- [info@multiplyingchurches.org](mailto:info@multiplyingchurches.org)

## A Coaching Relationship

- Contact one of our coaches through a private chat during the meeting.
- Or
- Contact Gary
- [info@multiplyingchurches.org](mailto:info@multiplyingchurches.org)

# Join us next week

As we look are Training Church  
Planters during COVID.

