

A photograph of a modern, light-colored desk. On the desk, there is a silver laptop open, a white smartphone, a pair of black headphones, and a stack of books. The background is a bright, out-of-focus office space. The text 'AXELERATE WEBINAR SERIES' is overlaid on the right side of the image in a large, bold, black font.

AXELERATE WEBINAR SERIES

WELCOME

www.axelerate.org

AXELERATE **LIVE**
multiplying leaders. multiplying churches

Join us

August 24-25, 2022

Wheaton College, Wheaton

Hosted by The Church Multiplication Institute





AXELERATE was birthed out of a great vision to see church planting accelerate throughout the myriad of denominations, associations and networks across North America.

We are seeking to hit the key leverage point in multiplication by serving those catalytic leaders who lead multiplication ministries.

AXELERATE seeks to be trans-denominational in scope by providing assistance to those who can without reservation agree with [The NAE Statement of Faith](#).

www.axelerate.org



About Us

**AXELERATE EXISTS TO
SERVE THOSE WHO ARE
SERVING CHURCH PLANTERS**



AXELERATE Services

Executive Consult	Executive Level 1 Coaching	Executive Level 2 Coaching
<ul style="list-style-type: none">Free Half-Day Executive Consult to assess your organizations capacity for church planting.	<ul style="list-style-type: none">10 Video Coaching Sessions2 Onsite Training and Coaching SessionsOne Free Admission to AxelerateAccess our Staff	<ul style="list-style-type: none">12 Video Coaching SessionsOne Free Admission to AxelerateAccess our Staff
FREE	\$5000	\$2500

\$2500

\$1250



Set Up a Consult

We exist to serve those leaders *servng* church planters

For more information on setting up a **free consultation** for your regional or national leadership team or how to enter into a **coaching relationship**

- Contact Gary Rohrmayer
 - [\(847\) 692-4125](tel:8476924125)
 - info@axelerate.org

A close-up photograph of two hands, one larger and one smaller, cupping a bright, glowing light source. The light is warm and golden, creating a soft glow around the hands. The background is blurred, showing more hands in a similar gesture. The overall mood is hopeful and nurturing.

FUNDING: HOW TO HAVE AS MUCH MONEY AS YOU NEED FOR PLANTING CHURCHES?

GARY ROHRMAYER & STEVE PIKE

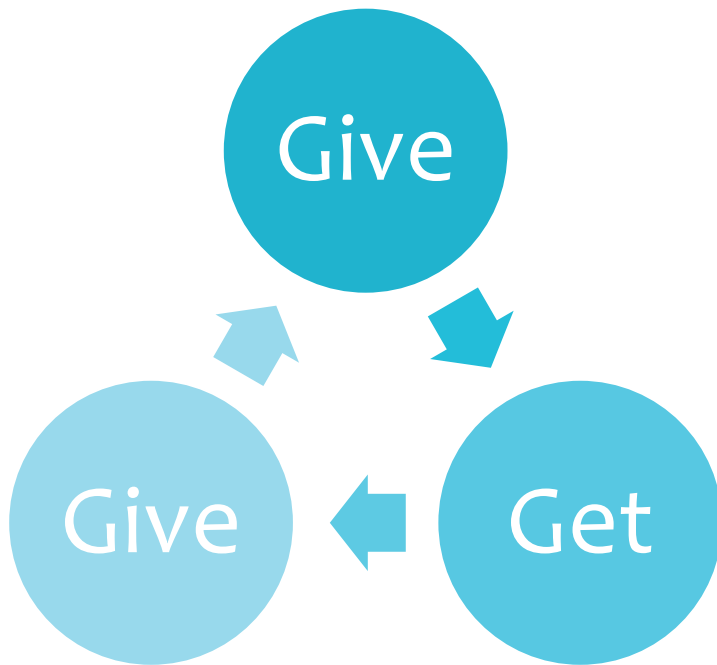
ATTITUDES

ORGANIZATIONAL ATTITUDES ARE CRITICAL
FOR FUNDING AND FINANCIAL HEALTH



Do we really understand organizational generosity?

Moving from Scarcity to Generosity



⁶ Remember this: Whoever sows sparingly will also reap sparingly, and whoever sows generously will also reap generously. ⁷ **Each of you should give what you have decided in your heart to give**, not reluctantly or under compulsion, for God loves a cheerful giver. ⁸ **And God is able to bless you abundantly, so that in all things at all times, having all that you need, you will abound in every good work.** ⁹ As it is written:

“They have freely scattered their gifts to the poor; their righteousness endures forever.”^[a]

¹⁰ Now he who supplies seed to the sower and bread for food will also supply and increase your store of seed and will enlarge the harvest of your righteousness. ¹¹ **You will be enriched in every way so that you can be generous on every occasion, and through us your generosity will result in thanksgiving to God.**

II Corinthians 9:6-11

Attitudes: What corporate attitudes need to be fostered or corrected?



Everything is fundraising

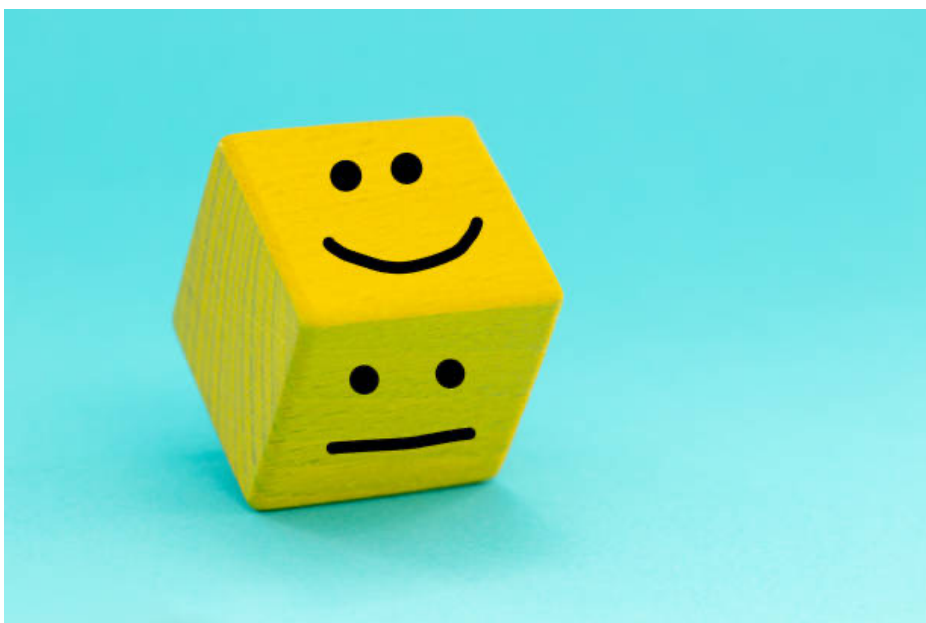
Starting new congregations must be the highest organizational priority.

God is the source. There will always be resources to carry out His mission.

People are the conduit. Obedience and creativity are essential.

Faith and courage are the fuel for funding.

Attitudes: What corporate attitudes need to be fostered or corrected?



Thankfulness and gratitude create a winsome environment.

Over and above generosity attracts over and above giving.

Character and competence create trustworthy organization.

Under sell and over deliver sets an honorable tone.

Vision for mission is essential for increasing giving capacity.

BEHAVIORS

A woman with dark hair, seen from behind, stands on a balcony. She is wearing a white long-sleeved shirt and has her right arm raised with a clenched fist, symbolizing achievement or commitment. The background shows a cityscape with tall buildings and a body of water under a bright sky. The image is partially obscured by dark grey and black rectangular overlays.

**ORGANIZATIONAL BEHAVIORS REFLECT OWNERSHIP
AND COMMITMENT TO THE VISION**

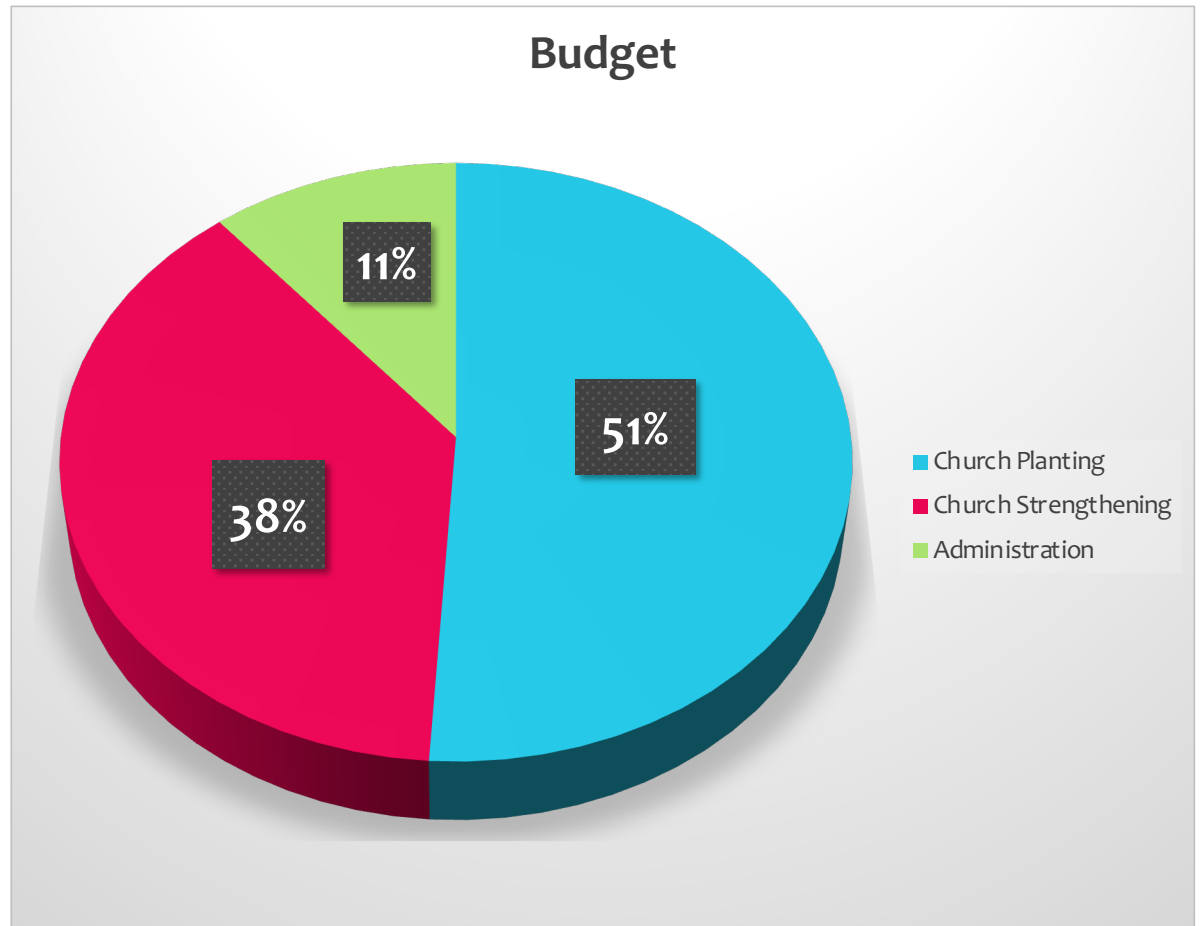
Behaviors: Are the key to building organizational culture.

- The organizational budget will reflect the value the organization places on starting new churches.
- Good systems for finding and disbursing resources will be set up.
- Clearly identified leader(s) who keep moving the funding ball forward.
- Positive Reinforcement shapes your values. You are what you celebrate.
- Consistent communication sets the agenda.
- Clearly defined results determine what is success.

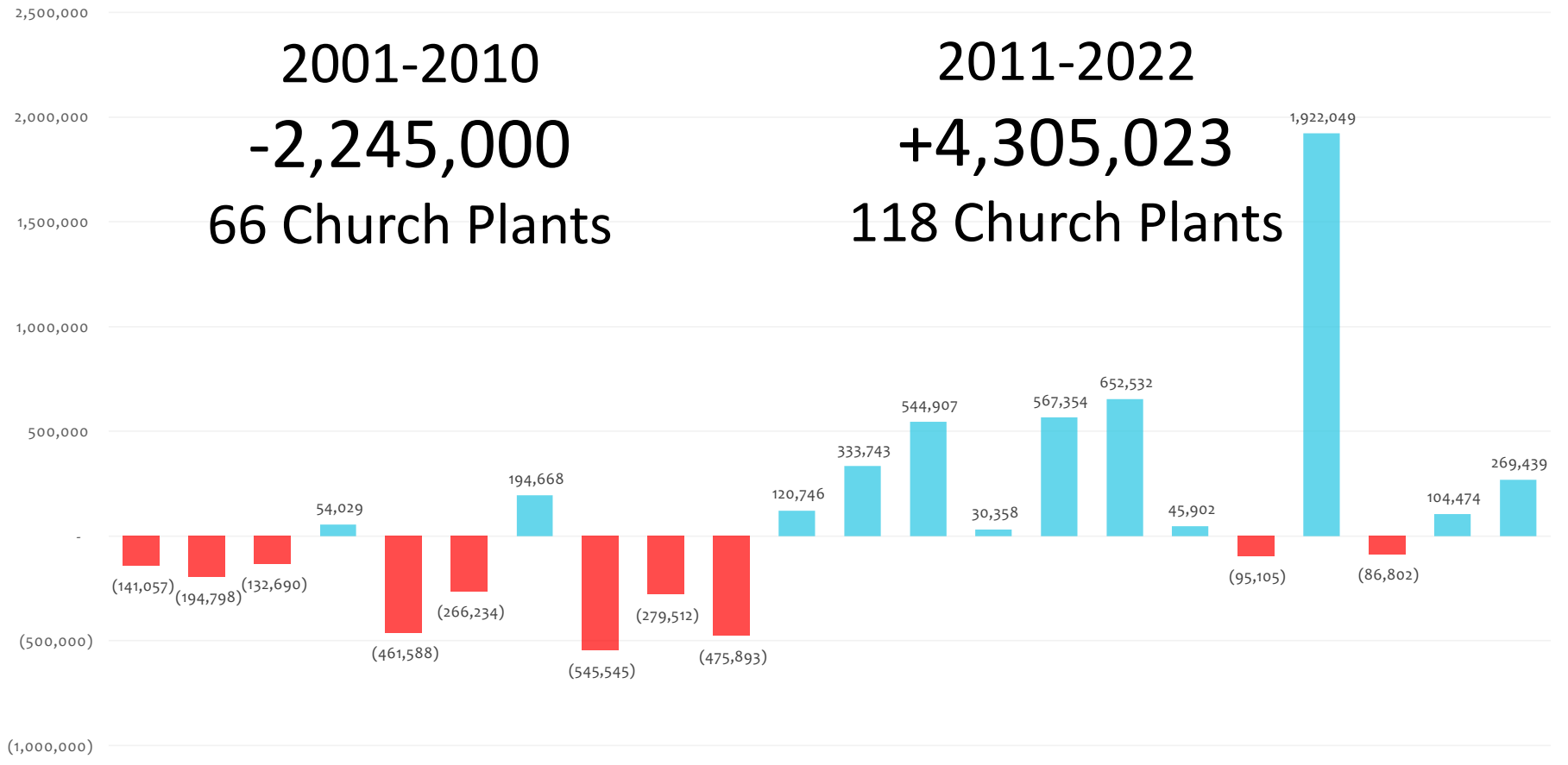


Budgeting

If church planting is not a funding priority, then it is not a priority.



Income/Expenses 2001-2022



AXELERATORS

ORGANIZATIONAL BEST PRACTICES



AXELERATORS

Five Funding Streams

1. Tithes and Offerings
2. Fundraising
3. Co-vocational
4. Non-profit partnerships
5. For-profit partnerships



Axelerators



Matching funds: Maximize the value of raised funds.

Benchmarks: Using money to incentivize behavior that leads to success.

Leveraging: Creating leveraged relationships between the organizational spheres.

Training: Requiring robust financial plans from church starters early in the approval process.

Flexible Funding Strategies: Traditional vs. Creative.
Traditional – Mostly dependent on tithes and offerings.
Creative – Assumes tithes and offerings will never be adequate.

“God’s work done God’s way
never lacks God’s supply.”
-J. Hudson Taylor

Axelerators



Acceleration happens when are systems are strengthened by strategic coaching.

- Form organizational habits that maximize revenue from the five core funding streams (handwritten 'Thank yous', quarterly letters)
- Intentional systems that lower costs of common commodities (electronics, advertising, branding, etc.)
- Fundraising training: For personal fundraising like parachurch organizations.
- Fundraising coaching: Provide a personal coach to walk with planters in the support raising process.
- Co-vocational development: Provide specialized coaching for those planters who plan to be tentmakers.
- Stewardship development: How to grow the church to it giving potential (preaching, capital campaigns, legacy giving).
- Organizational grant writing: Working with large foundations.
- Creative funding research and development (for-profit and non-profit revenue streams).

There is Still Time to Reorder Your Priorities

Now this is what the LORD Almighty says:

“Give careful thought to your ways.

You have planted much, but harvested little.

You eat, but never have enough.

You drink, but never have your fill. You put on clothes, but are not warm.

You earn wages, only to put them in a purse with holes in it.”

This is what the LORD Almighty says: “Give careful thought to your ways.

Go up into the mountains and bring down timber and build my house, so that I may take pleasure in it and be honored,” says the LORD.

Haggai 1:5-8



Andrew Griffiths



Bill LaMorey



Brandon Blessman



Brandon Tanksley



Bryant Applegate



Charles Butler



Steve Mason



Daniel Borti



Dennis Spears



Derrick Russell



Dr. Oris Guillaume



Dwight James



Getachew Tegegne



Greg Armstrong



Jessy Padilla



Justin McFarland



Kyle Chessor



Nathan Meyers



Paul Scott



Philip Barr



Ramiro Cruz



Roberto Rodriguez



Shawn Butler



Spencer Green



Stefen Gage



Stephan Cobbert



Trey Warren



Tyler Toon



Walter Angelica



Zack Potter

What are your
Priorities?

AXELERATELIVE
multiplying leaders. multiplying churches


Join us

August 24-25, 2022

Wheaton College, Wheaton

Hosted by The Church Multiplication Institute





Join Us
June 9th
@11 am cst

MAXIMIZING YOUR ORGANIZATIONAL ECOSYSTEM
STEVE PIKE AND DANIEL YANG



Set Up a Consult

We exist to serve those leaders *servng* church planters

For more information on setting up a **free consultation** for your regional or national leadership team or how to enter into a **coaching relationship**

- Contact Gary Rohrmayer
 - [\(847\) 692-4125](tel:(847)692-4125)
 - info@axelerate.org